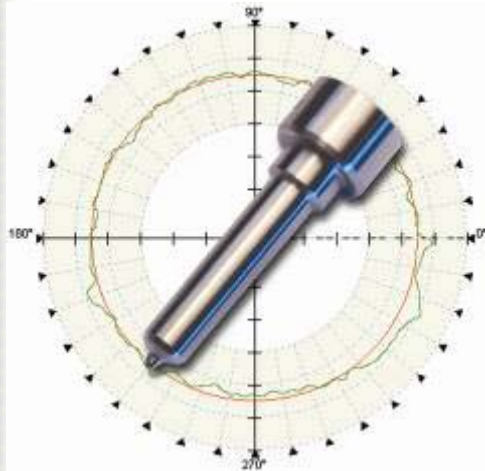
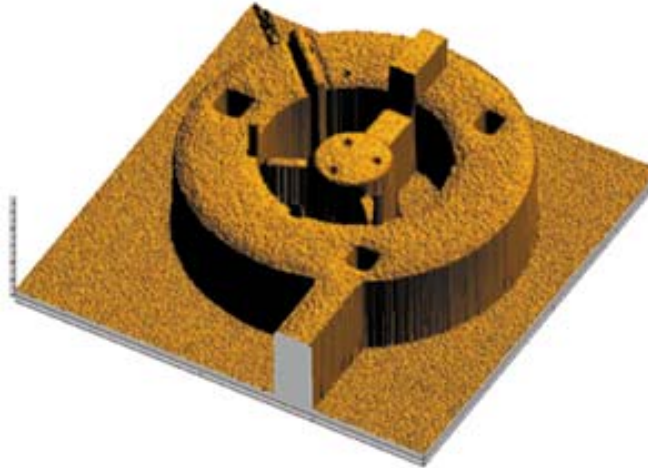


# Manufacturers of world-leading surface finish, roundness and form measuring instruments

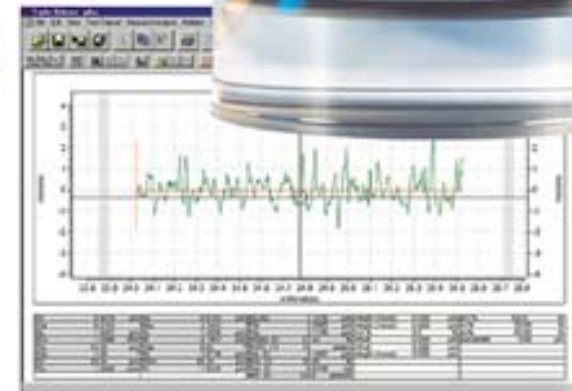
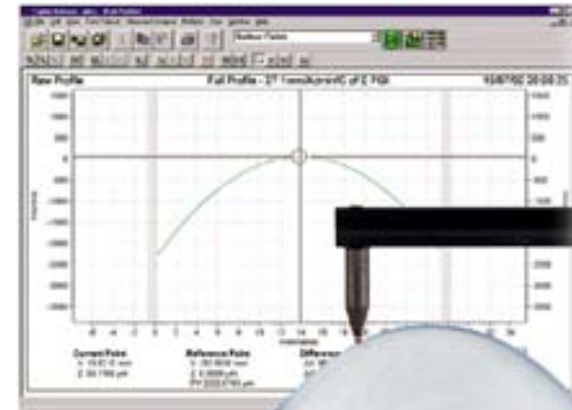


Roundness Measurement  
resolution (1.2nm)

\$80M turnover  
\$6M R&D  
290 employees



Non-contact 3D Profiling  
resolution (0.01nm)



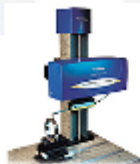
Surface and Form Measurement  
resolution (0.2nm)

# Introduction to Taylor Hobson



- **Taylor Hobson is an ultra-precision technology company operating at the highest levels of accuracy**
  - Offering contact and non-contact surface and form metrology solutions for the most demanding applications
  - We offer truly global support, with worldwide sales, technical support and aftermarket service infrastructure
    - 60%+ of our Sales are outside of Europe
- **In order to stay at the front of our field we invest heavily in Research & Development**
  - We have an extensive portfolio of Intellectual Property
  - Plus a wealth of industry and applications knowledge which has been built up over the past 50 years in Europe, Asia and America

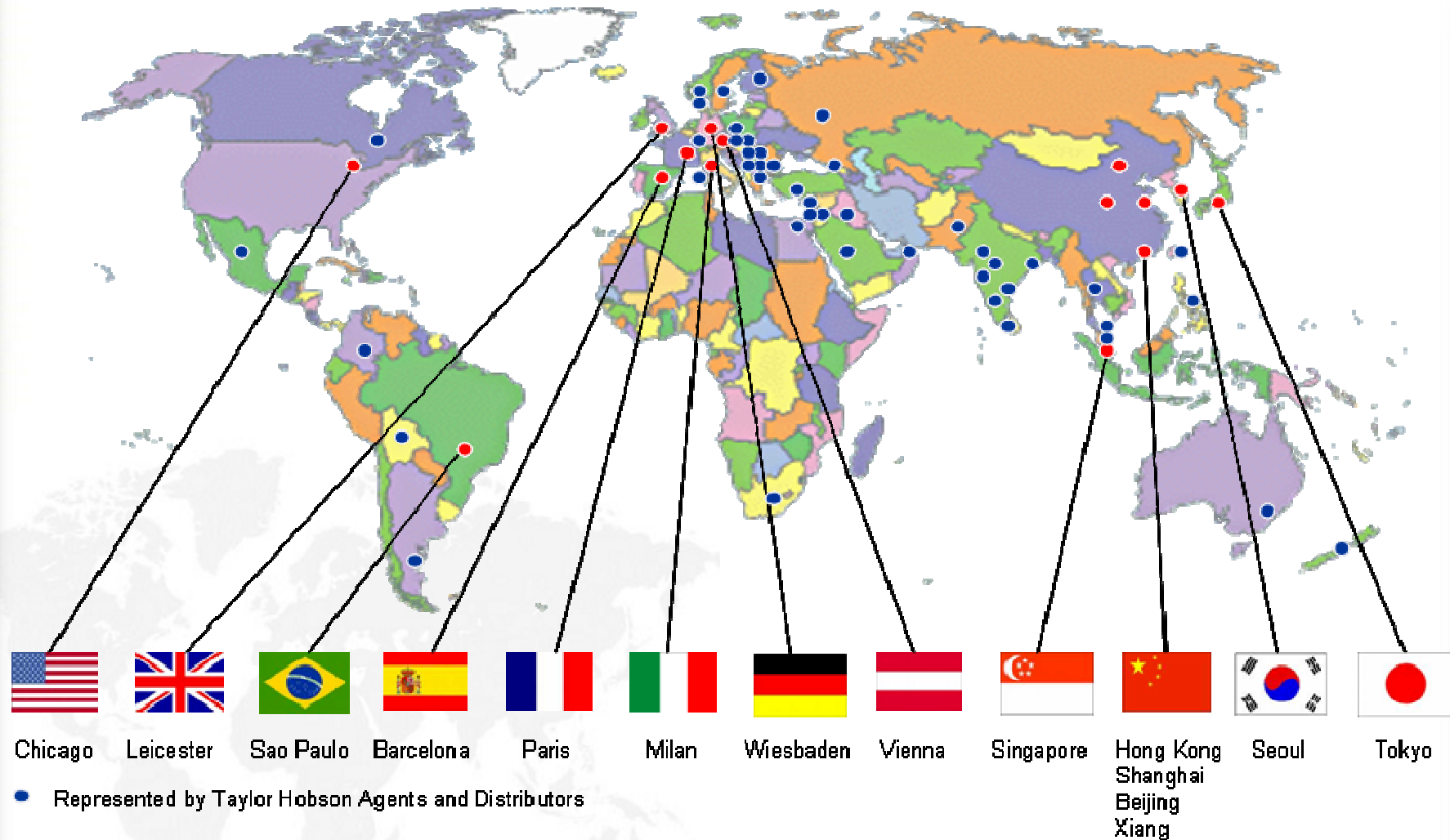
Form Talysurf



Talyrond



100+ years of innovation  
Founded 1886 in Leicester, England



Local support from a global company

# Local Service from a Global Company



- **The Accredited Service Engineer Programme**

- TH Products serviced by fully Accredited TH Service Engineer
  - Accreditation training includes: Metrology; Software; Service best practice; and instrument by instrument training modules
  - Covers TH staff and those of our agents
- Global knowledge sharing on our bulletin board
- Remote diagnostics available on instruments
- 52 fully accredited service engineers worldwide
- Courses run throughout the year

- **Priority Spares – Guaranteed stock globally**

- Spare part forecasting for critical and longer lead time components
- Local stocking where needed
- Shipment of critical parts the same day

- **The Exchange Programme**

- Immediate replacement, no waiting on repair lead times
- Instrument up time maximised
- Fixed pricing, making quotations faster and easier

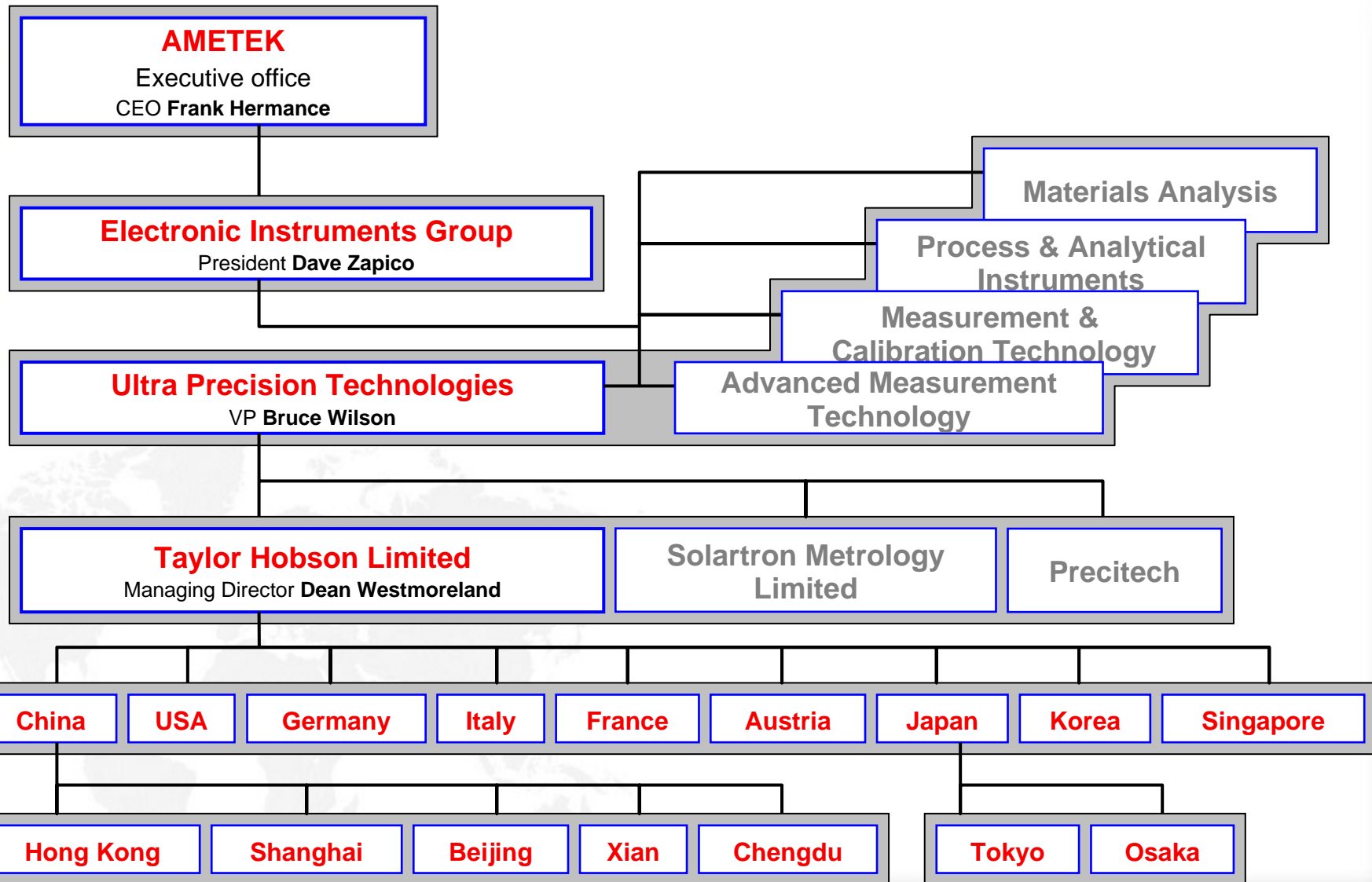
# Operational Excellence



- **New Investments**
  - 2002 - **Mori-Seiki MT 2000** - One hit machining of critical mill/turn components
  - 2003 - **Matsuura 405 Horizontal milling machine** - Reduced set up times & faster
  - 2007 - **Pallet pool system for Matsuura** - support unmanned running
  - 2008 - **Daewoo MX2500 Mill/Turn centre** - continuing to develop one hit machining
- **Barcoding**
  - Real time information on WIP throughout manufacture
  - Accurate Work-to lists generated and followed
- **Six Sigma Program**
  - 4 Champions, 3 Black Belts & 9 Green belts
  - Six sigma steering team meet monthly
- **Quality Steering Team**
  - Focus on Product Quality and good practice in Product Development
  - “Right First Time” performance is monitored
- **ISO 9001:2000 Quality management**
  - 16 Key processes with individual owners
- **ISO 14001 Environmental management**
  - Co-ordinated through environmental team



# Company Structure



# AMETEK - Overview



- **A leading global manufacturer of instrumentation and electromechanical devices**
  - \$2.4 billion in annual sales
    - 46% of sales are outside the United States
  - Employs nearly 10,000 colleagues throughout the world
  - Operates more than 70 manufacturing facilities and 70 sales and service centers in the United States and more than 30 other countries worldwide
- **New York Stock Exchange listed since 1930 (symbol: AME)**
- **Component of the Russell 1000 and S&P MidCap 400 indexes**

# Innovative metrology for demanding applications



**Talysurf CCI Lite**  
Bench Top Non-Contact  
3D Flatness & Roughness



**Talyrond 395**  
Automatic Roundness  
and Cylindricity



**Talysurf PGI Blu**  
Form and Surface Finish  
of steep lens molds

